



STEWART-MARCHMAN-ACT BEHAVIORAL HEALTHCARE

"exceptional and comprehensive behavioral healthcare"

Annual Report

July 1, 2015 - June 30, 2016



What's Inside:

2

Message from the Chairman of the Board		3
Message from the CEO		3
Board of Directors & Executive Management Team		4
Highlights from the Year		5
Revenues & Expenditures		6
Clients Served & Client Outcomes		7
New Programs for FY 2015-16		7
Locations		8
Programs/Services:		
Prevention Services	<i>Mission</i>	9
Outpatient Services	<i>To deliver exceptional and comprehensive behavioral healthcare to individuals and families in our community.</i>	10-12
Enrichment Program/Enrichment Industries	<i>Vision</i>	13
Residential Services	<i>A community where addiction and mental illness are treated promptly, comprehensively, and with respect for all.</i>	14-15
Crisis Services		16
Justice Services		17-18
Community Outreach & Education	<i>Values</i>	19
Celebrating Volunteers	Service · Integrity · Excellence	20
Partners/Funders		21
Stewart-Marchman-Act Foundation		22-23



A Message from the SMA Board Chairman



Connie S. Ritchey
Chairman of the Board

It has been my pleasure to serve as the Chairman of the Board of Directors for SMA Behavioral Healthcare these past two years. Over my tenure, much has changed; from the transition to new leadership, to the many new and innovative programs started in the communities we serve. The role that SMA plays is such a necessary one as we strive to care for people in their time of need. With nearly 26,000 individuals served over the last year, and over 50,000 during my two year tenure, you can see that the work SMA does is absolutely vital to the behavioral health wellbeing of the four counties we serve. Our Board of Directors along with our SMA staff are truly dedicated to the mission of SMA. As we look to the future, I am honored to help continue our shared vision, compassion, and hard work.

A Message from the CEO

Dear Friends,

As I reflect on the past year, I must first say that it has been a true honor for me to represent such an incredible organization. Our team of professionals are dedicated, engaged and have passion for the mission of SMA. There is not a week that goes by that we are not reminded of how important our work is in the communities we serve. Simply put, we save lives. As we do our work, we do things “The SMA Way”. The SMA Way gets to our core values of service, integrity and excellence. FY15-16 was another successful year for our team who work to make our world a better place than we found it. Join me as we continue our work in the communities we serve.



Ivan Cosimi
CEO

2016-17 Board of Directors

4

Chairman: Howard Stange

Vice-Chairman: Ted Serbousek

Secretary: Matthew Foxman

Treasurer: Thomas O'Keefe

Immediate Past Chair: Connie S. Ritchey

Director Emeritus: James Huger, Lawrence Kelly,
and Evelyn Lynn.

Members:

Salman Ahmed

Benjie Bates

David Beck

Maryann Fields

Jack Fisher

Alan Florez

Andrew Gurtis

Robert Hardwick

Carl Lentz

Bruce Page

James Rose

Rosaria Upchurch

Jakari Young

2016-17 Executive Management Team

Ivan Cosimi, MA, CPA

Rhonda Harvey, JD

Eric Horst, MBA, CPA

Antonio Canaan, MD

Richard Curley, MS

Patrick Miley, M.Ed, Ed.S, CAP, LMHC

Chester Wilson, Ed.D, CAP

Vicki Kirksey, SHRM-SCP, SPHR

Jennifer Secor, CFRE

Chief Executive Officer

Chief Operating Officer

Chief Financial Officer

Chief Medical Officer

Chief Information Officer

Vice-President, Development

Vice-President, Quality Assurance

Human Resources Director

SMA Foundation Executive Director

Highlights from the Year

myStrength Technology Initiative SMA implemented myStrength technology to bolster the clinical services SMA provides as well as help members of the SMA family. The technology is a free, on-line 24/7 support system for our clients, staff, family members and other members of the community. Users work through three specific e-learning modules- depression, anxiety and substance use, that can also be supported in therapy sessions. myStrength is based on evidence based interventions that SMA supports and encourages and includes Motivational Interviewing, Cognitive Behavioral Therapy and Dialectical Behavioral Therapy. There is also a mobile app to help support the person utilizing the services.

Reality House Kitchen Expansion The Reality House Kitchen expansion was approved by the Board of Directors to help meet the growing needs of the SMA Food Service program including the Culinary Arts Program and preparation of over 1,400 daily meals for SMA programs. The Culinary Arts Program provides clients at Reality House and SMA Work Release with instruction in Nutrition, Restaurant Management, Food Production, Dining Room Apprentice, and the Food Safety Manager certification which is all accredited through the University of Florida. Specifically, the expansion will allow the Reality House kitchen to meet all the baked goods needs of the SMA Food Service program resulting in significant savings for SMA.

Zero-Suicide Initiative The SMA Zero-Suicide Initiative is a partnership with the Florida Council for Community Health with the goal of reducing suicides in the community. The initiative included an internal agency suicide assessment to identify the needed areas for improvement within SMA programs followed by the establishment of a SMA internal committee which determined and distributed assignments for the committee members to address. The committee meets monthly to work on outlined zero-suicide initiative activities scheduled throughout the year. The initiative is intended to reach every program at SMA with a highly focused effort on reducing suicides in our community.

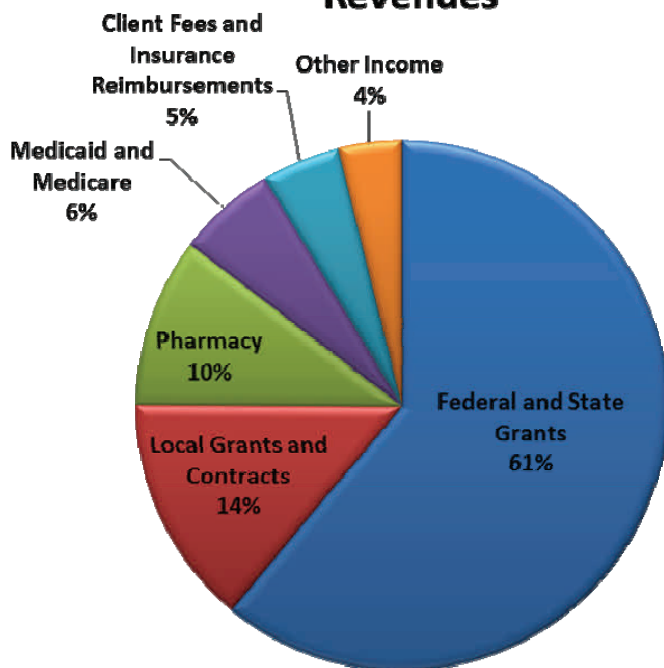
FACT Team for Circuit 7 SMA staff completed a rigorous study of the area's State Hospital Discharge information and furthered the case for a FACT team in all four counties of Circuit 7. After years of lobbying our legislators for an expansion of our FACT team to serve the area's most severely and persistently mentally ill, SMA was able to present compelling evidence of the need in the communities; resulting in ST. Johns county officially making it their number one legislative priority.

SourceAmerica Selects SMA Enrichment Program Officials from SourceAmerica visited Enrichment to discuss a new nation-wide consumer packaging network. The goal of the network is to leverage national corporate entities to work with smaller non-profits to play a role in the consumer product packaging process. After being selected to participate in the initial review of potential consumer product packaging providers, SMA's Enrichment program was then selected as a full member of the new Consumer Product Packaging network.

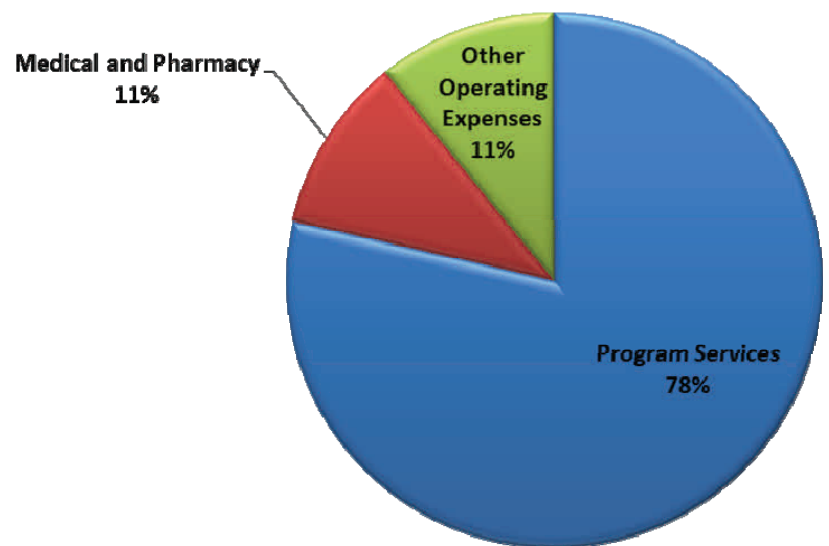
Revenues FY 2015-16 (Total revenues were \$50,712,562)

6

Revenues



Expenses



Expenditures FY 2015-16 (Total expenditures were \$49,273,721)

Clients Served

During FY 2015-16, SMA provided services to over 25,446 clients of which 53% were female and 47% were male. The demographics of those clients approximates that of the general population of the four counties SMA covers with: 76% White, 14% Black, 4% multi-racial, 2% American Indian or Alaska Native, or Asian (less than 5% did not report a race). 9% described their ethnicity as Hispanic or Latino.

Most frequently occurring client diagnoses:

• Bipolar Disorder	12%	• Alcohol Abuse/Dependence	9%
• Depressive Disorders/Mood Disorder NOS	12%	• Cannabis Abuse/Dependence	8%
• Schizophrenia/Schizoaffective/Psychotic Disorders	11%	• Opioid Dependence/Abuse	8%
• Other Mental Health Diagnosis	17%	• Other Substance Abuse Diagnosis	8%

New Programs for FY 2015-16

Opening in June 2016, the St. Augustine Drop-In Center is a central place for self-help, advocacy, education, opportunity, socialization for those with a mental health diagnosis. The Drop-In Center is peer operated, community-based center for people 18 years and older with the goal of providing a safe, friendly, confidential, supportive and recovery-oriented environment. It provides an opportunity for socializing and networking that addresses the isolation felt by many on the road to mental health recovery. The Drop-In Center is located in St. Augustine and will primarily serve residents of St. Johns County.

To offer those in the community with Severe and Persistent Mental Illness a safe place to experience:

Wellness, Activity, Vitality, Empathy, and Support

St. Augustine Drop-In Center



920 State Road 16, St Augustine, FL 32084

Locations *(Services vary by location so please contact our Access Center 24/7 at 800.539.4228 for more information)*



Proudly Serving Flagler, Putnam, St. Johns & Volusia Counties

**SMA MAIN CENTER &
ADMINISTRATIVE SERVICES**
1220 Willis Ave.
Daytona Beach, FL 32114

**W. CHESTER "CHET" BELL
CRISIS SERVICES AT PINEGROVE**
1150 Red John Dr.
Daytona Beach, FL 32124

REALITY HOUSE I
1341 Indian Lake Rd.
Daytona Beach, FL 32124
RH II located at Pinegrove Campus

**RESIDENTIAL ADOLESCENT
PROGRAM (RAP)**
3875 Tiger Bay Rd.
Daytona Beach, FL 32124

CANTLEY OUTPATIENT CENTER
702 S. Ridgewood Ave.
Daytona Beach, FL 32114

ENRICHMENT PROGRAM
225 Fentress Blvd., Suite A
Daytona Beach, FL 32114

FACT
207 San Juan Avenue
Daytona Beach, FL 32114

BEACH HOUSE
1004 Big Tree Rd.
South Daytona, FL 32119

**SOUTH EAST VOLUSIA OUTPATIENT
CARE CENTER**
311 N. Orange Street
New Smyrna Beach, FL 32168

DELAND COUNSELING CENTER
105 W. Calvin St.
DeLand, FL 32720

**DELAND MEN'S RESIDENTIAL
TREATMENT**
1251 N. Stone St
DeLand, FL 32720

**FOUR TOWNES OUTPATIENT
CARE CENTER**
356 Englenook Dr.
DeBary, FL 32720

**WARM/
VINCE CARTER SANCTUARY**
301 Justice Lane
Bunnell, FL 32110

**PUTNAM OUTPATIENT, DETOX
& RESIDENTIAL**
330 Kay Larkin Dr.
Palatka, FL 32177

**ST. JOHNS OUTPATIENT
CARE CLINIC**
200 San Sebastian View
St. Augustine, FL 32084

SMA FOUNDATION
1220 Willis Avenue
Daytona Beach, FL 32124

DAYTONA BEACH WORK RELEASE
3601 US Hwy 92
Daytona Beach, FL 32124

ST. AUGUSTINE DROP-IN CENTER
920 State Road 16
St. Augustine, FL 32084

Prevention Services

The **Access Center** provides a 24/7 central point of entry for clients to SMA services via a toll free number, 1-800-539-4228, and is staffed with Patient Care Coordinators who provide free screenings, a wide range of information and referral services for all citizens of Volusia, Flagler, Putnam and St. Johns counties seeking behavioral health services. The Access center also handles crisis calls by utilizing solution focused crisis intervention. **During FY 2015-16, the Access Center answered 69,414 calls.**



The East Central Florida Keep Kids Drug Free **Regional Prevention Center** makes presentations and disseminates free materials to the community on alcohol, tobacco and other drug abuse prevention. Prevention strategies include educating the community on risk and protective factors related to drug abuse, training and equipping community leaders with tools to prevent substance use and suicide, and promoting educational activities and opportunities for youth. The KKDF RPC is funded by the KKDF specialty license tag which can be purchased at all Florida State Tag Offices. **In FY 2015-16, a total of 4,679 KKDF specialty license plates were sold, and more 17,197 clients were served in our region by SMA's KKDF Prevention Center.**

SMA's **Healthy Start Program** provides in-home services to pregnant and postpartum women, and women with children aged newborn to three. Some of the services offered and/or provided are needs assessments, home visits, community referrals, educational information, and on-going support. Healthy Start staff educate parents about prenatal care, immunizations, nutrition, well-baby care, mental health, housing assistance, day care assistance, HIV testing, tobacco free lifestyles, and career development. **During FY 2015-16, Healthy Start provided services to 7,172 clients.**



SMA provides specialty prevention services through a mobile **Prevention on the Move (POM)** unit, staffed with prevention professionals who bring services to our clients in care and to our communities where individuals might otherwise not be able to access services. POM's 37-foot RV travels throughout the community providing HIV "rapid test" and Hepatitis screening and testing, and linkages to care for participants who test positive for HIV or Hepatitis, or who have other needs. **During FY 2015-16, POM provided HIV testing services to 981 individuals.**

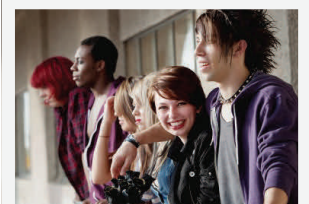


The **Anti-Drug Initiative (ADI)**, Level I Program is a web based diversion program for non-violent, first and second time drug offenders and is offered to drug possession arrestees with no prior felony convictions. ADI consists of an on-line intake session followed by 6 on-line sessions that are monitored by professionally qualified program staff. Participants are also required to provide randomly scheduled urine specimens. The on-line program is accessible 24/7, allowing participants to complete the sessions at their convenience. Successful completion of the program results in “no filing” of the referring charge by the State Attorney’s Office. **During FY 2015-16, the Anti-Drug Initiative successfully diverted 784 drug offenders from the local criminal justice system.**

“It (ADI) was a reality check, made me take a closer look inside myself. Enabled me to realize I was in denial about my problem.” ~ Anonymous

SMA provides **Adult Outpatient (AOP) Substance Abuse Counseling** including an enhanced outpatient treatment program for individuals participating in the DUI, adult and family dependency drug courts in Volusia, Flagler and Putnam counties. AOP Services provide individual sessions, weekly groups and monthly treatment plan reviews. Family participation in treatment is encouraged, and family educational and counseling services are provided to support the family in the recovery process. Outpatient services allow the individual to remain active with work, family, and the community while they participate in treatment. **During FY 2015-16, SMA served 2,235 adult clients in its outpatient substance abuse counseling programs.**

Adolescent Outpatient Substance Abuse Counseling (ADOP) services are provided at five locations by masters level, licensed and/or certified professionals. Outpatient services include individual therapy with family involvement with options to include group therapy and other research based approaches to effect a positive change in the client. Treatment is specifically directed toward repairing disrupted relationships, reducing impulsivity, developing social and life skills, and providing treatment interventions for the youth to remain substance free. **During FY 2015-16, SMA served 1,005 adolescents in outpatient services.**



Physician Services Medication Outpatient Program, comprised of clinics in Bunnell, Daytona Beach, DeLand, New Smyrna Beach, Palatka and St. Augustine, provide medical and clinical support services to individuals with severe and persistent mental illness and co-occurring disorders. Goals include lessening or eliminating the symptoms of mental illness and rebuilding a person's skills to facilitate recovery and reconnection to the community. The teams are comprised of advanced registered nurse practitioners, nurses, therapists, case managers, a life skills coach and a site supervisor. Services include psychiatric evaluation, treatment planning, medication management, nursing services, therapy, and targeted case management. **During FY 2015-16, Physician Services served 8,623 clients.**



The Forensic Program provides forensic services to persons with severe and persistent mental illness in the four counties of Judicial Circuit Seven who have felony criminal charges. The Program provides monitoring, supervision, and case management services for persons adjudicated Incompetent to Proceed or Not Guilty by Reason of Insanity and for persons being released from prison needing continued psychiatric care. **During FY 2015-16, Forensics provided 182 clients with forensic case management services, served 34 clients in the prison ReEntry program and tracked 233 defendants with competency concerns through the legal system.**



The **Florida Assertive Community Treatment (FACT) program** provides comprehensive support services to 100 individuals who have severe and persistent mental illness, and have had multiple psychiatric hospitalizations. Members of the team double as specialists, and personally deliver a wide scope of services including vocational rehabilitation, psychiatric assessments, individual therapy, nursing services, medication delivery, housing negotiation, nutrition and diabetes education, smoking cessation support and education, ADL coaching, substance abuse treatment, and crisis assessment and intervention 24 hours a day, every day of the year. Since 75% of services are provided in the community, individuals who might otherwise be relegated to life-long hospital stays are able to maintain independent living in the community of their choice; and approximately half have established employment related goals.

"I have recently been placed in my own apartment (first time living independently in 24 years). The amount of pride I have felt is unmeasurable. Everything was made available by the FACT team. Thank you and God bless!" ~ Robert W.



SMA's **Pharmacy** provides our clients with quick and easy access to medications prescribed by our psychiatrists, physicians, and nurse practitioners. Our Patient Assistance Specialist help clients access new atypical anti-psychotic medications that they otherwise could not afford. **During FY 2015-16, SMA's Pharmacy filled 58,929 prescriptions for 3,938 clients.**

Family Intervention Services (FIS) works with families involved in the child welfare system who are experiencing substance abuse/mental health problems are at risk of losing their children. Family Intervention Specialists assess and link clients to treatment/services and provide case management services until the client is engaged in services.

FIS staff members provide interventions in the home and in the community. **During FY 2015-16, FIS served 382 individuals.**

Family Intensive Treatment Team (FITT) is a comprehensive in-home treatment program that provides help to families involved with child welfare (DCF/CPC) due to substance misuse in Volusia County. Peer Recovery Specialists are also used in FITT to provide support and help families connect with the world of positive sober support in their local community. **During FY 2015-16, FITT served 119 families.**

Child and Adolescent Targeted Case Management (TCM) services are provided in Putnam and St. Johns counties to assist the individual and their family in gaining access to needed medical, social, educational, and other related services. The goal of TCM is to promote independent functioning through coordination of the provision of quality treatment and support services. **During FY 2015-16, there were 52 TCM clients served.**

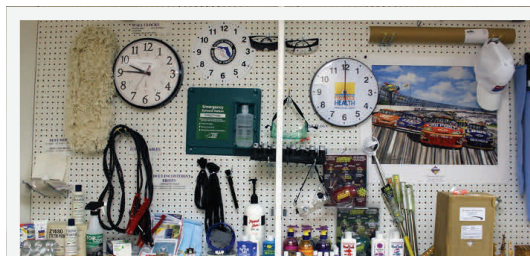
Community/Court Liaison (Outreach) Services outreach staff in Volusia, Putnam, and St. Johns counties assure that assessments and recommendations are accurately reported to the courts. They also act as a liaison for the courts and other referral sources to help offenders access treatment services within SMA's service delivery system while also providing direct linkage to clients being discharged from CSU's and in need of follow up services.

The **SMA Treatment Team at the Volusia County Corrections Department** provides mental health screening, psychiatric services, crisis intervention, and discharge planning to inmates at the Volusia County Branch Jail and the Volusia County Correctional Facility.



Enrichment Program/Enrichment Industries

The **Enrichment Program** encompasses **Enrichment**, **Supported Employment** and **Enrichment Industries**. **Enrichment** provides psychosocial rehabilitation and adult day training for adults with mental illness, developmental disabilities and /or co-occurring disorders. These services are designed to help participants live and work more fully in the community and improve the quality of their lives. The groups offered by Enrichment target increasing independent living, social and/or employment skills and include pre-vocational training, coping, life and social skills trainings, Job Club, basic math, basic reading, as well as group and individual therapy. **Supported Employment** provides assistance to individuals desiring competitive employment in the community. These services include screening and job matching, job development, job placement, on-site training assistance, and life-long follow-along services to help the individual maintain employment. **During FY 2015-16, more than 181 individuals received services in our Enrichment and Supported Employment programs.**



Enrichment Industries (EI) provides support to manufacturers and other companies with their light manufacturing, assembling, packaging, and promotional product services. **EI** also manufactures their own line of products which are available for sale (crab traps, safety glasses and goggles, ear plugs, office wall clocks, dust mops and jumper cables). **During FY 2015-16, EI provided employment opportunities for 135 clients and had sales of \$327,424 from products and manufacturing support.**



Another component of **EI** is **Service Contracts**, which provides janitorial and lawn care services for public and private entities. The goal is to provide quality services while providing employment opportunities for individuals with disabling conditions. The service contracts maintain a 75% or better ratio of work being completed by individuals with a disabling condition at all sites. **This component of Enrichment has 113 employees with disabling conditions who work at their Service Contract Sites, making up 81% of the workforce. During FY 2015-16, there were 17 contract sites in 5 counties totaling \$2.849 million in revenues.**

WARM (Women Assisting Recovering Mothers) at Vince Carter Sanctuary is a long term residential treatment facility for 80 women exhibiting symptoms of drug and alcohol dependence, with 52 slots designated for those women who are pregnant, post partum, and parenting young children. The women live on campus in a therapeutic and supportive environment. Those with children are able to have their children (under the age of 6) in residence with them. Children age 6 and over are able to visit overnight on weekends.

WARM is a diverse, multi-cultural program providing a broad range of therapeutic, wrap around interventions, based upon the client needs identified during the admission assessment. Strategies include: Moral Reconation Therapy, Motivational Interviewing Therapy, Cognitive Behavioral Therapy, Seeking-Safety Curriculum guided therapies, Stages of Change Model, Strengthening Families – Non-Violent Parent Education and Living in Balance Curriculum.



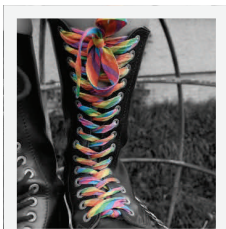
During FY 2015-16, WARM at Vince Carter Sanctuary served 226 women and 88 children. A total of 18 drug free babies were born to mothers living at Vince Carter Sanctuary during the year.

Treatment = Results: We are proud to be able to report that over 203 babies have been born drug-free through the services at WARM.

The **Putnam Adult Residential Treatment (ART) Program** is a short-term intensive program for adult males and is designed to provide clients with the tools necessary to begin and maintain their recovery. The program philosophy is to create an atmosphere of safety and care, and to promote the stability of daily living in recovery through therapeutic interaction. Co-occurring capable, the program offers as needed psychiatric evaluation and the management of psychotropic medications. **During FY 2015-16, the Putnam residential program served 85 clients.**

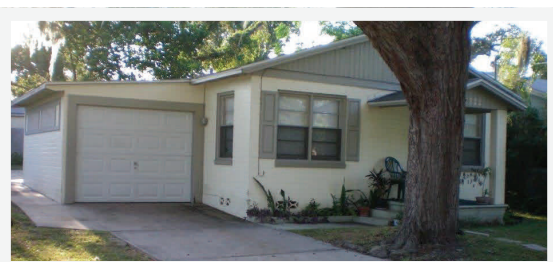
DeLand Men's Residential Treatment Program (DMRT) is a 54-bed men's substance abuse treatment program accepting both voluntary and involuntary clients experiencing a wide variety of substance abuse/dependence issues. Besides the primary focus on substance abuse disorders, the program is designed to effectively manage co-occurring mental health issues. DMRT provides a structured atmosphere, promoting self-awareness through individual, group, community-based therapy and psychiatric intervention. **During FY 2015-16, DMRT served 211 clients.**

BEACH House is a shelter that provides short-term respite for youth ages 10 to 17. These youth are truant, ungovernable or runaway/homeless. Referrals come from our **CINS/FINS Service Manager**, CINS/FINS (Children In Need of Services/Families In Need of Services), court, Safe Place sites, law enforcement, school personnel and parents. We provide youth in our care with shelter, meals, individual and group counseling, educational groups, and family therapy. Our goal is family reunification and assisting the family in building communication skills and relationships. Program staff also promote awareness activities related to youth at risk in our community. **During FY 2015-16, BEACH House programs served 397 youth and their families.**



The **Residential Adolescent Program (RAP)** is a 24-bed facility serving substance dependent youth ages 13-17, utilizing individual, group, and family interventions. The average length of stay is 4-6 months. The proven principles of AA/NA are the foundation for the clinical program. Dialectical Behavioral Therapy is an important ingredient in treatment along with positive peer culture, reality therapy, outdoor therapeutic model, experiential learning theory, and behavior modification systems. Education services are provided by Volusia County Schools. The program is co-occurring capable, staffed by licensed and certified therapists, nurses, and youth specialists. **During FY 2015-16, the RAP program served 64 youth and their families.**

SMA's **Supportive Housing Program** provides a safe, sober, and supportive living environment for persons who are homeless. It specifically targets the chronically addicted, often dually-diagnosed who are residing in unsuitable environments or treatment programs. Permanent housing sites are currently in use for homeless persons with disabilities in six locations throughout Volusia County. Because SMA's Recovery Homes operate at capacity most of the time, a referral network has been developed with other supportive housing options in the community in an effort to address the housing needs of clients leaving SMA's residential programs. **Currently SMA houses 24 residents, including 8 children.**



SMA's Crisis Services provide 24-hour emergency screening and admission to mental health crisis stabilization, drug abuse detoxification and/or referral to other services. Our crisis services are located at Pinegrove in Daytona Beach, the central point for screening, referral and placement of involuntary clients under the Baker Act and Marchman Act. Baker Act court is now held weekly on the Pinegrove Campus and a court liaison provides assistance to families filing Marchman Act petitions for involuntary assessment or treatment. **In FY 2015-16, SMA Crisis Services provided 6,196 screenings at Pinegrove.**

The Volusia County Crisis Stabilization Unit (CSU) and Detoxification (Detox) Services are licensed for 30 beds and 19 beds respectively. Our average length of stay in these units is 3.5 days for CSU and 3.3 days for Detox. Individuals receive medication appropriate to their presenting problems, individual and group counseling, and discharge planning toward the next appropriate level of care. Individuals can be safely medically detoxified from alcohol, opiates, prescription medications, and other physically addicting drugs. Registered nurses and behavioral health techs are on duty 24/7 as is a Psychiatrist and/or Advanced Registered Nurse Practitioner to direct treatment. **In FY 2015-16, the SMA Detox Unit treated 1,576 individuals and 3,208 individuals were treated in SMA's CSU.**

The **Volusia Rape Crisis Center** specializes in advocacy, crisis intervention and trauma counseling and therapy for adolescents and adults who have experienced sexual assault as a primary or secondary victim. Advocates provide crisis intervention services, assist victims in understanding their rights and options and offer support throughout the medical and criminal justice process to ensure the victim's recovery. Advocates/specialists are able to be reached 24/7, by calling the 24 hour Rape Crisis Hotline (800-503-7621). The Volusia Rape Crisis Center is recognized as the primary rape crisis center for Volusia County.

The **Crisis Triage and Treatment Unit (CTTU)** is a crisis assessment and referral service for Flagler County residents experiencing a behavioral health crisis and is located in the Brown and Brown Outpatient building at the Vince Carter Sanctuary. This program is funded through a grant awarded to Flagler County and is limited to individuals escorted to the program by law enforcement between the hours of noon and midnight daily. Law enforcement is able to transport these individuals to SMA to assess and determine the appropriate clinical disposition. When required and appropriate, SMA then transports to a receiving facility in Volusia County. **During FY 2015-16, the CTTU program served 305 individuals.**



The Putnam Detoxification Unit is a licensed 8-bed facility, serving the needs of Putnam and St. Johns counties. Individuals receive medications appropriate for their presenting problems, group and individual counseling and discharge planning. Alcohol and prescription drug abuse accounts for the majority of all admissions. The unit is staffed 24/7 with nursing care (Registered, and Licensed Practical Nurses), and is supervised by a Director of Nursing who is a licensed ARNP. **During FY 2015-16, the Putnam Detox Unit served 292 clients.**

Justice Services



Reality House is a 173-bed, adult male residential program, contracted through the Florida Department of Corrections. This facility provides a 9 to 12 month residential substance abuse treatment program and a Work Release Program. It is the only therapeutic community of its kind in Florida offered to inmates outside the walls of a prison. Milieu therapy and social learning theory provide the foundation for the recovery and reentry process. Services include culinary arts program, individual and group counseling, family education, recreation, spiritual services, self help groups, anger management, communication skills, daily living skills, domestic violence groups, family dynamics group, drug screening, gradual reintegration back into the community, gainful employment, accumulation of savings from paid employment, and outside referrals as needed. **During FY 2015-16, a total of 348 clients were served at Reality House 1 and 2.**

SMA Work Release is a newly private contracted Florida Department of Corrections 84-bed work release facility. The program allows selected inmates to work at paid employment in the community during the last months of their confinement. Inmates must return back to the facility at the end of each workday. Work Release provides: gradual reintegration back into the community, gainful employment, accumulation of savings from paid employment, preservation of family and community ties, culinary courses and participation in self-help programs. Fifty beds are available for outpatient substance counseling. **During FY 2015-16, a total of 248 clients received services from SMA Work Release.**



The SMA Food Service is responsible for preparing and delivering breakfast, lunch, and dinner to 10 separate SMA facilities, which accounts for over 1400 meals per day. The meals are prepared out of Reality House, where the SMA Food Service staff members are responsible for the clients at Reality House working back in the kitchen. In addition, the clients at Reality House and SMA Work Release are also offered an educational opportunity through the Culinary Arts Program. This affords them instruction in Nutrition, Restaurant Management, Food Production, Dining Room Apprentice, and the Food Safety Manager certification which is all accredited through the University of Florida. Some clients, if qualified, can gain certification through the American Culinary Federation by earning the Certified Culinarian, or the Certified Pastry Culinarian distinction. **To date, we have certified 31 clients through this opportunity.**

"I have an update for you. I've been promoted to Sous chef. Got a substantial raise plus 10% ownership. We are going to open another restaurant soon which will put me as executive chef in one of them. They are very happy with me and want to keep me for the long term. "

A recent graduate of the Culinary Art Program.

The Adult Justice ReEntry Program located at Columbia Correctional Institution in Lake City, Florida, provides multiple services for the Department of Corrections and the inmates assigned to them. First is the ReEntry Transitional Program itself, which is the only program to serve high risk, close custody inmates in the state regardless of crime committed, using a "modified therapeutic community" approach. The ReEntry Transitional Program provided life skills, job readiness, and socialization skills training to 331 client-inmates during FY 2015-16. There is also TIER 1 Substance Abuse Prevention classes, serving 65 general population inmates, and "Thinking For Change" (T4C) classes to 95 general population inmates during FY 2015-16. Anger Management classes and "Parenting From Inside" classes were provided to an additional 53 general population inmates. **During the FY 2015-16, a total of 637 inmates were served in all programs offered by SMA at CCI.**

The **Correctional Treatment Diversion Program's (CTDP)** mission is to improve the quality of life of individuals and families affected by substance abuse and criminal behavior through prevention, intervention, and treatment. CTDP is a collaborative project with Volusia County, the Seventh Judicial Circuit, Volusia County Division of Corrections and SMA. The program is designed to serve adults who are suffering from a substance abuse problem, are amenable to treatment and who would have served a sentence of more than 120 days. Services provided include assessment, individual and group therapy, court advocacy and case management. **In FY 2015-16, 411 clients were served by CTDP.**

Community Outreach & Education

Our **Family Education Program (FEP)**, utilizing the evidence based Family Unit Matrix model, provides 12 educational sessions for family members. The family education program describes how addiction impacts the entire family and offers assistance. The goal is to provide information and guidance to families struggling to cope with the family impact of addictive disease. **During FY 2015-16, FEP provided training to 274 individuals.**



SMA is one of the community partners that make **Crisis Intervention Training (CIT)** possible, along with NAMI of Volusia/Flagler County and the Volusia and Flagler County Sheriffs' Departments. The CIT program is a community effort designed to improve the skills of law enforcement responding to mental health emergencies with goals of assuring safety, understanding, and service to the mentally ill and their families. **To date this program has trained more than 1,180 first responders in Volusia and Flagler Counties including 169 officers in FY 2015-16.**

"Most useful training I have received in my 10 years of experience in law enforcement/emergency services."

Mental Health First Aid is an 8-hour training certification course which teaches participants a five-step action plan to assess a situation, select and implement interventions and secure appropriate care for the individual. It introduces participants to risk factors and warning signs of mental health problems, builds understanding of their impact and overviews common treatments. **During FY 2015-16, 386 community members received Mental Health First Aid Training.**



"It's been a while that a training has been helpful and directly relevant."

SMA's **Speakers Bureau** offers presentations in the community on topics ranging from SMA services as a whole, specific programming, and/or behavioral health issues. Speakers are free and available for local special events and radio appearances upon request.



SMA provides opportunities to volunteer, intern, or volunteer in groups in almost all of our programs. **During FY 2015-16, volunteers donated over 27,250 hours, which translates to \$628,952 of in-kind match.**

The **12-Step Community** is extremely active in SMA's programs. There are multiple AA and NA groups, as well as an Al-Anon group, facilitated weekly by volunteers from the community and provided at SMA sites.

In addition, SMA has a volunteer **Board of Directors** made up of 18 professionals from our community. Board members attend monthly Board meetings, serve on committees, participate in advocacy activities and work with the SMA Foundation on fundraising efforts. They put in numerous hours toward the governance of SMA, hours that are not included in the volunteer hours previously indicated.

There are also additional groups such as the **FACT Advisory Committee, WARM/Vince Carter Sanctuary Community Support Council, Adolescent Advisory Committee, and Enrichment Industries Community Support Council**, where community members participate to provide valuable feedback on SMA services.

In April 2016, volunteers were celebrated and recognized for their contributions to SMA at their **Annual Volunteer Appreciation Dinner** event at the Palmetto Club in Daytona Beach. Over 80 staff and volunteers attended and were celebrated for all that they give back to our community.

For FY 2015-16, SMA honored **Catherine Thomson** as the Volunteer of the Year!

Thank You!

SMA would like to thank its community partners and funders for their part in SMA's success in FY 2015-2016*



* SMA partners with numerous agencies and organizations, all of which may not be included



The **Stewart-Marchman-Act Foundation** focuses on building the resources to complement the programs of Stewart-Marchman-Act Behavioral Healthcare, providing advocacy, community education, and funds to conduct research. The Foundation continues with its various fundraising efforts and events to increase community awareness and reduce the stigma of addiction

A Message from the SMA Foundation Board

2016-2017 SMA Foundation Board



Melissa Murphy,
SMAF Board Chair
2015-2017

This past year, the Foundation has been able to fulfill its mission, to provide support to the services and programs of SMA Behavioral Health Services, thanks to all of our generous donors, supporters and volunteers. It has been truly a year of celebration and transition, a year of progress and commitment. Most of all, it was another year for all of us associated with the Foundation to be able to work together toward the goal of improving the health of all in Volusia, Flagler, St. Johns and Putnam Counties. The Capital Campaign which was launched in 2015, is now very close to meeting our \$500,000 goal in order to co-locate SMA's adolescent programs; improving the quality of program and services to the families we serve. There are a lot of exciting opportunities and events planned for the future and the SMA Foundation Board is committed and excited to be able to continue to work with our current donors, members, and partners. We also look forward to welcoming new supporters who believe it is critical to provide exceptional and comprehensive services to individuals in our communities living with addiction and/or mental illness.

Officers:

Chairman:

Melisa Murphy

Vice-Chairman:

Carl Lentz, IV

Secretary:

Andrew Gurtis

Treasurer:

Sherry Keyes

Immediate Past Chair:

Jon Greaves

Founder/ Director Emeritus:

James H. Foster

Director Emeritus:

Peter Heebner

Members:

Debra Berner

Lonnie Brown

Pam Carbiener, MD

Jimmy Foster

Maureen France

Julie Giese

Frank Heckman

Mark Johnson

Larry Kelly

Lawrence J. McDermott

David Perryman

Jill Simpkins

Howard Stange

Bob Wheeler

Ryan Will



Jennifer Secor, SMA Foundation Executive Director, comes to SMA and the SMA Foundation with 20 years' experience related to nonprofit management, community relations and development and has been a Certified Fundraising Executive (CFRE) since 2002. She currently is the president-elect for the Space Coast Chapter of the Association of Fundraising Professionals (AFP). Jennifer recently started with the Foundation, and she has said that she is very impressed with the diversity and quality of programs provided by SMA. What also stands out, to her, is the dedication of staff to those families and individuals SMA serves in the community. Jennifer stated that, "There are a lot of great things happening at SMA and the SMA Foundation and I'm honored and excited to be a part of it".

SMA Foundation accomplishments for the past year include:

Continuation of the **2015-2016 Capital Campaign** with a goal to raise \$500,000 for **BEACH House Program** facility renovations at the **Dr. James E. Huger Adolescent Campus**. The scheduled renovations will also bring SMA's BEACH House and **RAP (Residential Adolescent Program)** onto the same site, and will benefit area families by enabling children to stay close to home for individualized treatment and recovery needs.



Raising \$129,000 at the **Annual Dinner Celebration** and auction held at the Daytona 500 Club at Daytona International Speedway on June 29. The foundation honored former NASCAR crew chief, TV analyst and motivational speaker **Steve Letarte** at the banquet. The event broke attendance and fundraising efforts for the SMA Foundation.



"Who is Jay?" the Foundation's successful, mental health month awareness campaign is going strong! The campaign's main focus is providing education and awareness and offers hope, and materials and resources regarding mental illness. The "Who is Jay?" Campaign hosted a Mental Health Symposium in St. Augustine in May 2016 with over 80 in attendance.

Over \$23,000 was donated to **WARM (Women Assisting Recovering Mothers)** at the Vince Carter Sanctuary through the support of our friends at the **Daytona Blues Festival**.

Assisted SMA by providing financial support for various projects and programs to include the: **Joan M. Kelly Playground** at WARM at the Vince Carter Sanctuary, commercial kitchen project at **Reality House**, and various needed building updates.



Stewart-Marchman-Act Behavioral Healthcare is an equal opportunity, tobacco and drug-free workplace and prohibits discrimination in all programming and activities on the basis of race, color, sex, age, religion, national origin, marital status, disability, veteran's status, or other legally protected status.

If you are a person with a disability who needs any accommodation, you should contact the office of our ADA Coordinator who is physically located at 1220 Willis Avenue, Bldg. 8, Daytona Beach, Florida - 32114 or through the mail via 1220 Willis Avenue, Box 78, Daytona Beach, FL - 32114.

***You can also call, fax or e-mail your needs via
Phone - (386) 236-3200, Fax - (386) 236-1819 or
Email ADAcoordinator@SMAbehavioral.org.***

SMA is CARF accredited and SMA programs are sponsored by SMA, LSF Health Systems, LLC, and the State of Florida Department of Children and Families.

**Access Center 24/7
1-800-539-4228**

Check out our website
www.SMAbehavioral.org



Like us on Facebook
<https://www.facebook.com/SMABehavioralHealthServices>



Follow us on Twitter
<https://twitter.com/SMAbehavioral>

