

STEWART-MARCHMAN-ACT BEHAVIORAL HEALTHCARE

"exceptional and comprehensive behavioral healthcare"

Annual Report

July 1, 2014 - June 30, 2015

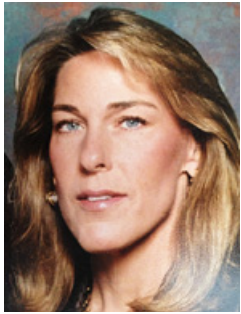


Celebrating Positive Change for Over 50 Years

What's Inside:

| | |
|--|----|
| Message from the Chairman of the Board | 3 |
| Message from the CEO | 4 |
| Board of Directors & Executive Management Team | 5 |
| Celebrating the Past Year's Accomplishments | 6 |
| Revenues & Expenditures | 8 |
| Clients Served & Client Outcomes | 9 |
| Evidence Based Practices Used in Treatment | 9 |
| Locations | 9 |
| Programs/Services: | |
| Access to Services | 11 |
| Prevention Services | 11 |
| Outpatient Services | 12 |
| Enrichment Program/Enrichment Industries | 15 |
| Residential Services | 16 |
| Crisis Services | 18 |
| Criminal Justice Services | 19 |
| Community Outreach & Education | 21 |
| Celebrating Staff | 22 |
| Celebrating Volunteers | 24 |
| Partners/Funders | 25 |
| Stewart-Marchman-Act Foundation | 26 |

A Message from the SMA Board Chairman



Connie S. Ritchey
Chairman of the Board

MISSION

To deliver exceptional and comprehensive behavioral healthcare to individuals and families in our community.

It has been a privilege to have been Stewart-Marchman-Act's Chairman of the Board for the last year. The Board members I serve with have been amazing, passionate, and committed to the success of SMA during this exciting time in our history. I have had the pleasure of witnessing on a closer scale how the SMA employees conduct their business. During the last 12 months, the SMA family has gone through the transitioning of the CEO position, the hiring of a new Executive Director for the SMA Foundation, the hiring of a new CFO, the addition of a COO position, the addition of Rape Crisis services, added work release programs, relocation to brand new offices in St. Johns County, the quick addition of numerous services for clients in our community and the unselfishness of our staff in the helping of another agency. Through it all, the employees at SMA never missed a beat. They continually focused on excellence in the outcomes of the over 24,500 clients they served, one person at a time.

When the Japanese mend broken objects, they aggrandize the damage by filling the cracks with gold. They believe that when something's suffered damage and has a history, it becomes more beautiful. When someone has suffered behavioral issues, be it thru mental illness or substance abuses, at SMA we only see them as someone with a unique history who deserves our best compassionate care to guide them back into vibrant, beautiful people who can go forward in their lives.

It is truly an honor to be a small part of that SMA family.

3

A Message from the CEO



Ivan Cosimi
CEO

VISION

A community where addiction and mental illness are treated promptly, comprehensively, and with respect for all.

In December 2014, Chet Bell, our CEO for the past seven years, officially retired. His 25 years of leadership with SMA included the merger of Act Corporation and Stewart-Marchman Center, demonstrating his vision of a community collaborating to meet a shared goal of improving lives. We are grateful for his leadership and the goodwill he has established to further our mission to deliver exceptional and comprehensive behavioral healthcare to our community.

SMA has had significant changes in leadership in 2015. Leadership changes are often followed by disruption, but these significant changes in leadership seemed to strengthen our agency and our commitment to those we serve. Leaders at all levels came together to define the culture that describes what it means to be an employee at SMA. These leaders developed an outstanding program for all staff affectionately called, "The SMA Way." This staff-directed program is already in full-swing, promoting our culture and demonstrating that we care, we are mission-focused, and we are doing our part to create a community that reflects our vision and values.

I'm enthusiastic about my new role at SMA and I am proud of the work we do every day. Simply put, by providing exceptional behavioral health care, we save lives. I would like to thank our Board of Directors, the SMA Foundation, our incredible staff and our community partners. I am excited about the future ahead and I look forward to continued success for those we serve.

4

2015-16 Board of Directors

Chairman: Connie S. Ritchey

Vice-Chairman: Howard Stange

Secretary: Matthew Foxman

Treasurer: Thomas O'Keefe

Immediate Past Chair: Rosaria Upchurch

Director Emeritus: James Huger, Lawrence Kelly,
and Evelyn Lynn.

Members:
Salman Ahmed
Benjie Bates
David Beck
Paul Crow
Robert Feather
Maryann Fields
Jack Fisher

Charles Flavio
Andrew Gurtis
Robert Hardwick
Melissa Murphy
Bruce Page
James Rose
Ted Serbousek
Jakari Young

2015-16 Executive Management Team

Ivan Cosimi, MA, CPA
Rhonda Harvey, JD
Eric Horst, MBA, CPA
Antonio Canaan, MD
Richard Curley, MS
Patrick Miley, M.Ed, Ed.S, CAP, LMHC
Chester Wilson, Ed.D, CAP
Vicki Kirksey, SHRM-SCP, SPHR
Carolyn Sentelik, MPA

Chief Executive Officer
Chief Operating Officer
Chief Financial Officer
Chief Medical Officer
Chief Information Officer
Vice-President of Outpatient Services
Vice-President of Quality Assurance
Human Resources Director
SMA Foundation Executive Director

5

The Year in Review/Agency Celebrations

6

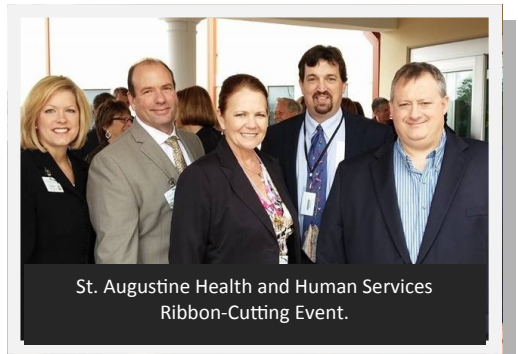
July 2014— **SMA Staff Honored by Florida Council for Community Mental Health.** At the FADAA/FCCMH Conference/Annual Awards Banquet, two of SMA's employees were honored; **Carol Gilmore**, Peer Specialist at Willis Avenue, was awarded the 2014-2015 Peer Specialist of the Year. **Hussein Muhammad**, Behavioral Health Tech at Pinegrove, was awarded Direct Service Provider of the Year.

July 2014— **First Daytona IDignity Event a Great Success.** SMA was proud to be a part of the first ever Daytona Beach IDignity Volusia event. During the event: 43 people got their Florida birth certificates, 51 got help in getting their social security cards, 70 were assisted in applying for out of state birth certificates, and best of all, 73 people left the event with their Florida driver license or State ID in their hand!

August 2014— **Enrichment Retains Alachua County Library Janitorial Contract.** We were successful in keeping the Alachua County Library janitorial contract. The contract, for 1 year with option to renew for an additional 4 years, went out for competitive bids and although our bid was not the lowest, we kept the contract because of our track record of quality work. Congratulations to the entire Enrichment Team especially Sandi Newton, Lynn Bryant, Hank Cobb and Patricia Jackson who presented SMA's bid to the county.

January 2015— **SMA Welcomes a New CEO.** Ivan Cosimi took over the helm on 1 January after having served for 15 years as the CFO under the former CEO, Chet Bell. In the words of Ivan, "I am honestly humbled by the decision of our Board. Chet Bell was an incredible mentor of mine. He will be missed for his insight and knowledge of the behavioral health industry and the leadership he provided to all of us at SMA." Building on Chet's legacy, Ivan established his guiding principles to be: excellent customer service, superior quality of care and leadership.

February 2015— **Saint Augustine Clinic Moves.** SMA staff moved to the new St. Johns County Health & Human Services building at 200 San Sebastian View in St. Augustine on February 23rd. St. Augustine outpatient services now occupy 10,387 square feet of the second floor wing. In lieu of rent, SMA provides in-kind services for the community.



St. Augustine Health and Human Services
Ribbon-Cutting Event.

Carolyn Sentelik, Ivan Cosimi, Rhonda Harvey,
PaCCI Staff: Joe Dzienis, Cy Perry, Mark Pitts,

March 2015— **W. Chester “Chet” Bell Retirement Ceremony.** Community members and SMA Behavioral Health leadership gathered to honor the work and celebrate the retirement of W. Chet Bell. Chet’s career in behavioral health services spanned 35 years, 25 of which were spent here in Daytona Beach. His leadership resulted in many great accomplishments such as expansion of SMA’s services into Putnam and St. Johns counties, the moving of Project WARM from Daytona to Bunnell, increasing bed capacity, and the merger of Act Corp. and Stewart Marchman Center in 2008. The event, hosted by the SMA Foundation, also included a special announcement that in Chet’s honor the Detox and Crisis Services Unit called “Pinegrove” would be renamed and will now be called: “The W. Chester “Chet” Bell Crisis Center at Pinegrove”.



Ivan Cosimi, Carolyn Sentelik, Rhonda Harvey, Connie Ritchey, Jon Greaves and Chet Bell

March 2015— **SMA Work Release.** Florida’s Department of Corrections (DOC) awarded SMA with the 84 bed work release center in Daytona Beach. With a startup date in June, the entire SMA Justice Services division worked hard to get this major program transitioned from DOC to SMA all the while maintaining the high quality service our clients and funders have come to expect from SMA.

April 2015— **Tiger Bay Campus Project & Reality House Kitchen Expansion.** These two ambitious capital projects received Board approval. The kitchen expansion will provide additional meal capacity and savings as well as increased student capacity for the Culinary Arts Program. The Tiger Bay Campus project will enhance the Beach House and RAP residential programs and create savings through consolidation of services at one campus.

May 2015— **SMA Takes on a Larger Role in the Community.** Some new programs and program expansions the organization added include: DeLand Men’s Residential Treatment Program -54 residential beds for males, WARM Residential capacity increased from 60 to 85 beds for females, Treatment Alternatives for Safe Communities (TASC)—jail based assessments to determine if a substance use treatment is recommended for clients involved in the legal system, the Correctional Treatment Diversion Program (CTDP) -a substance use treatment program that involves components in the jail, residential treatment and outpatient in Volusia County. Overlay behavioral health services for two HUD programs: My Place Apartments on North Street in Daytona Beach and Our House Apartments on Northern Road in South Daytona.

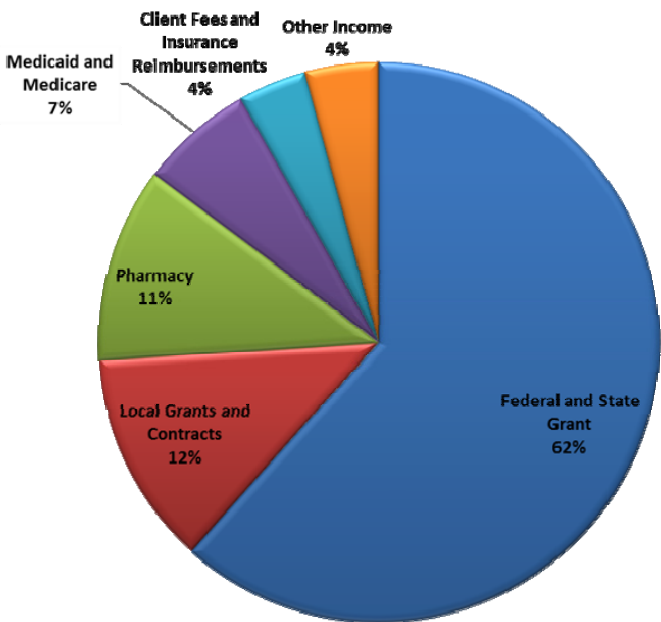
June 2015— **Introduction of “The SMA Way.”** The SMA Way serves as the foundation of the culture of SMA. At its core are our mission, vision, and values. Developed by a group of SMA supervisors, it is a training program that orients our employees to who we are, what we do, and how we do it. This training is being rolled out to all current employees and will become a key part of our training of all new SMA staff.

7

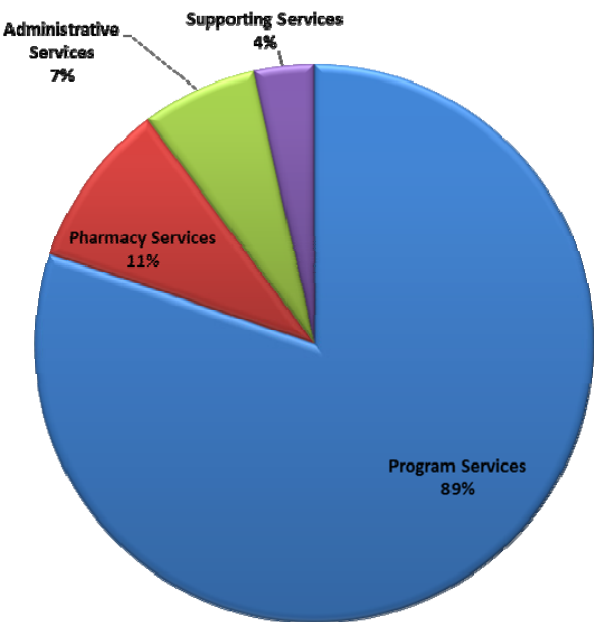
Revenues FY 2014-15 (Total revenues were \$44,317,640)

8

Revenues



Expenses



Expenditures FY 2014-15 (Total expenditures were \$43,034,189)

Clients Served

During FY 2014-15, SMA provided services to over 24,500 clients of which 57% were female and 43% were male. The demographics of those clients approximates that of the general population of the four counties SMA covers with: 67% White, 16% Black and 4% American Indian or Alaska Native, Native Hawaiian or other Pacific Islander, or multi-racial (10% did not report a race). 9% described their ethnicity as Hispanic or Latino.

Most frequently occurring client diagnoses:

| | | | |
|---|-----|-----------------------------------|----|
| • Schizophrenia/Schizoaffective/Psychotic Disorders | 19% | • Other Substance Abuse Diagnosis | 6% |
| • Bipolar Disorder | 19% | • Cannabis Abuse/Dependence | 6% |
| • Depressive Disorders/Mood Disorder NOS | 16% | • Alcohol Abuse/Dependence | 5% |
| • Other Mental Health Diagnosis | 14% | • Opioid Dependence/Abuse | 9% |

Evidenced Based Practices Used in Treatment

SMA clients have a broad range of clinical diagnoses. In fact, many individuals have multiple diagnoses, typically a substance use disorder combined with a thought disorder and a personality disorder. To treat these chronic illnesses, SMA uses clinical practices that have been proven effective through ongoing research. The following is a partial listing of the evidence based practices used by SMA to assure individuals receive the most effective clinical interventions.

Evidenced Based Approaches Utilized in SMA Programming:

- Motivational Interviewing-Motivational Enhancement Therapy
- Cognitive Behavioral Therapy
- Matrix Model – Social and Life Skills Building
- MANDT—Crisis De-Escalation Techniques
- Programs of Assertive Community Treatment
- Seeking Safety – Attainment of safety from trauma, PTSD and substance abuse
- Moral Reconciliation Therapy
- Comprehensive Continuous Integrated System of Care
- Solution Focused Brief Therapy
- Systemic Family Therapy
- Living in Balance

9

Locations *(Services vary by location so please contact our Access Center 24/7 at 800.539.4228 for more information)*

Proudly Serving Flagler, Putnam, St. Johns & Volusia Counties

SMA MAIN CENTER & ADMINISTRATIVE SERVICES
1220 Willis Ave.
Daytona Beach, FL 32114

W. CHESTER "CHET" BELL CRISIS SERVICES AT PINEGROVE
1150 Red John Dr.
Daytona Beach, FL 32124

REALITY HOUSE I
1341 Indian Lake Rd.
Daytona Beach, FL 32124
RH II located at Pinegrove Campus

RESIDENTIAL ADOLESCENT PROGRAM (RAP)
3875 Tiger Bay Rd.
Daytona Beach, FL 32124

CANTLEY OUTPATIENT CENTER
702 S. Ridgewood Ave.
Daytona Beach, FL 32114

ENRICHMENT PROGRAM
200 Fentress Blvd., Suites C&D
Daytona Beach, FL 32114

FACT
207 San Juan Avenue
Daytona Beach, FL 32114

BEACH HOUSE
1004 Big Tree Rd.
South Daytona, FL 32119

SOUTH EAST VOLUSIA OUTPATIENT CARE CENTER
311 N. Orange Street
New Smyrna Beach, FL 32168

DELAND COUNSELING CENTER
105 W. Calvin St.
DeLand, FL 32720

DELAND MEN'S RESIDENTIAL TREATMENT
1251 N. Stone St
DeLand, FL 32720

FOUR TOWNES OUTPATIENT CARE CENTER
356 Englenook Dr.
DeBary, FL 32720

WARM/ VINCE CARTER SANCTUARY
301 Justice Lane
Bunnell, FL 32110

PUTNAM OUTPATIENT, DETOX & RESIDENTIAL
330 Kay Larkin Dr.
Palatka, FL 32177

ST. JOHNS OUTPATIENT CARE CLINIC
200 San Sebastian View
St. Augustine, FL 32084

SMA FOUNDATION
1220 Willis Avenue
Daytona Beach, FL 32124



SMA is CARF accredited.

**SMA Programs are sponsored in part by the State of Florida
Department of Children and Families.**



The **Access Center** provides a 24/7 central point of entry for clients to SMA services via a toll free number, 1-800-539-4228, and is staffed with Patient Care Coordinators that provide free screenings, a wide range of information and referral services for all citizens of Volusia, Flagler, Putnam and St. Johns counties seeking behavioral health services. The Access center also handles crisis calls by utilizing solution focused crisis intervention. **During FY 2014-15, the Access Center answered 53,605 calls.**



The East Central Florida Keep Kids Drug Free **Regional Prevention Center** makes presentations and disseminates free materials to the community on alcohol, tobacco and other drug abuse prevention. Prevention strategies include educating the community on risk and protective factors related to drug abuse, training and equipping community leaders with tools to prevent substance use and suicide, and promoting educational activities and opportunities for youth. The KKDF RPC is funded by the KKDF specialty license tag which can be purchased at all Florida State Tag Offices. **In FY 2014-15, a total of 4,923 Keep Kids Drug Free specialty license plates were sold, and more than 46,709 contacts were made in our region by SMA's KKDF Prevention Center.**

SMA's **Healthy Start Program** provides in-home services to pregnant and postpartum women, and women with children aged newborn to three. Some of the services offered and/or provided are needs assessments, home visits, community referrals, educational information, and on-going support. Healthy Start staff educate parents about prenatal care, immunizations, nutrition, well-baby care, mental health, housing assistance, day care assistance, HIV testing, tobacco free lifestyles, and career development. **During FY 2014-15, Healthy Start provided services to 7,935 clients.**



SMA provides specialty prevention services through a mobile **Prevention on the Move (POM)** unit, staffed with prevention professionals who bring services to our clients in care and to our communities where individuals might otherwise not be able to access services. POM's 37-foot RV travels throughout the community providing HIV "rapid test" and Hepatitis screening and testing, and linkages to care for participants who test positive for HIV or Hepatitis, or who have other needs. **During FY 2014-15, POM had contact with 55,742 people and provided HIV testing services to 1486 individuals.**

Outpatient Services

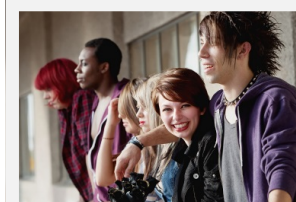


The **Anti-Drug Initiative (ADI)**, Level I Program is a web based diversion program for non-violent, first and second time drug offenders and is offered to drug possession arrestees with no prior felony convictions. ADI consists of an on-line intake session followed by 6 on-line sessions that are monitored by professionally qualified program staff. Participants are also required to provide urine specimens that are randomly scheduled. The on-line program is accessible 24/7, allowing participants to complete the sessions at their convenience. Successful completion of the program results in "no filing" of the referring charge by the State Attorney's Office. **During FY 2014-15 the Anti-Drug Initiative successfully diverted 751 drug offenders from the local criminal justice system.**

"It (ADI) was a reality check, made me take a closer look inside myself. Enabled me to realize I was in denial about my problem." ~ Anonymous

SMA provides **Adult Outpatient (AOP) Substance Abuse Counseling** including an enhanced outpatient treatment program for individuals participating in the DUI, adult and family dependency drug courts in Volusia, Flagler and Putnam counties. AOP Services provide individual sessions, weekly groups and monthly treatment plan reviews. Family participation in treatment is encouraged, and family educational and counseling services are provided to support the family in the recovery process. Outpatient services allow the individual to remain active with work, family, and the community while they participate in treatment. **During FY 2014-15, SMA served 1,169 adult clients in its outpatient substance abuse counseling programs.**

Adolescent Outpatient Substance Abuse Counseling (ADOP) services are provided at five locations by master level, licensed and/or certified professionals. Outpatient services include individual therapy with family involvement with options to include group therapy and other research based approaches to effect a positive change in the client. Treatment is specifically directed toward repairing disrupted relationships, reducing impulsivity, developing social and life skills, and providing treatment interventions for the youth to remain substance free. **During FY 2014-15, SMA served 1,106 adolescents in outpatient services.**



Physician Services Medication Outpatient Program, comprised of clinics in Bunnell, Daytona Beach, DeLand, New Smyrna Beach, Palatka and St. Augustine, provide medical and clinical support services to individuals with severe and persistent mental illness and co-occurring disorders. Goals include lessening or eliminating the symptoms of mental illness and rebuilding a person's skills to facilitate recovery and reconnection to the community. The teams are comprised of advanced registered nurse practitioners, nurses, therapists, case managers, a life skills coach and a site supervisor. Services include psychiatric evaluation, treatment planning, medication management, nursing services, therapy, and targeted case management. **During FY 2014-15 SMA served 7,798 clients in Physician Services.**



The **Forensic Comprehensive Community Support Team (FCCST)** provides forensic services to persons with severe and persistent mental illness in Volusia & Flagler Counties who have criminal charges. Forensic CCS team services include jail diversion, jail screening, and case management for persons being released from prison or deemed to be Incompetent to Proceed or Not Guilty by Reason of Insanity. **During FY 2014-15, the Forensic Program provided 166 clients with forensic case management and managed 177 clients in re-entry.**



The **Florida Assertive Community Treatment (FACT) program** provides comprehensive support services to 100 individuals who have severe and persistent mental illness, and have had multiple psychiatric hospitalizations. Members of the team double as specialists, and personally deliver a wide scope of services including vocational rehabilitation, psychiatric assessments, individual therapy, nursing services, medication delivery, housing negotiation, nutrition and diabetes education, smoking cessation support and education, ADL coaching, substance abuse treatment, and crisis assessment and intervention 24 hours a day, every day of the year. Since 75% of services are provided in the community, individuals who might otherwise be relegated to life-long hospital stays are able to maintain independent living in the community of their choice; and approximately half have established employment related goals.

"I have recently been placed in my own apartment (first time living independently in 24 years). The amount of pride I have felt is unmeasurable. Everything was made available by the FACT team. Thank you and God bless!" ~ Robert W.

13



SMA's **Pharmacy** provides our clients with quick and easy access to medications prescribed by our psychiatrists, physicians, and nurse practitioners. Our **Patient Assistance Specialist** help clients access new atypical anti-psychotic medications that they otherwise could not afford. **During FY 2014-15, SMA's Pharmacy filled 60,676 prescriptions for 4,205 clients.**

Family Intervention Services (FIS) works with families involved in the child welfare system who are experiencing substance abuse/mental health problems are at risk of losing their children. Family Intervention Specialists assess and link clients to treatment/services and provide case management services until the client is engaged in services.

FIS staff members provide interventions in the home and in the community. **During FY 2014-15, FIS served 172 individuals.**

Family Intensive Treatment Team (FITT) is a comprehensive in-home treatment program that provides help to families involved with child welfare (DCF/CPC) due to substance misuse in Volusia County. Peer Recovery Specialists are also used in FITT to provide support and help families connect with the world of positive sober support in their local community. **During FY 2014-2015 FITT served 81 families.**

Child and Adolescent Targeted Case Management (TCM) services are provided in Putnam and St. Johns counties to assist the individual and their family in gaining access to needed medical, social, educational, and other related services. The goal of TCM is to promote independent functioning through coordination of the provision of quality treatment and support services. **During FY 2014-15, there were 42 TCM clients served.**

Community/Court Liaison (Outreach) Services outreach workers in Volusia, Putnam, and St. Johns counties assure that assessments and recommendations are accurately reported to the courts. They also act as a liaison for the courts and other referral sources to help offenders access treatment services within SMA's service delivery system while also providing direct linkage to clients being discharged from CSU's and in need of follow up services.

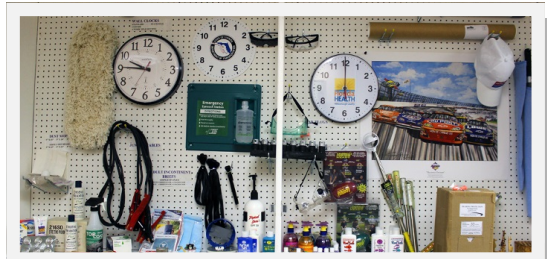
The **SMA Treatment Team at the Volusia County Corrections Department** provides mental health screening, psychiatric services, crisis intervention, and discharge planning to inmates at the Volusia County Branch Jail and the Volusia County Correctional Facility.



14

Enrichment Program/Enrichment Industries

The **Enrichment Program** encompasses **Enrichment**, **Supported Employment** and **Enrichment Industries**. **Enrichment** provides psychosocial rehabilitation and adult day training for adults with mental illness, developmental disabilities and /or co-occurring disorders. These services are designed to help participants live and work more fully in the community and improve the quality of their lives. The groups offered by Enrichment target increasing independent living, social and/or employment skills and include pre-vocational training, coping, life and social skills trainings, Job Club, basic math, basic reading, as well as group and individual therapy. **Supported Employment** provides assistance to individuals desiring competitive employment in the community. These services include screening and job matching, job development, job placement, on-site training assistance, and life-long follow-along services to help the individual maintain employment. **During FY 2014-15, more than 282 individuals received services in our Enrichment and Supported Employment programs.**



Enrichment Industries (EI) provides support to manufacturers and other companies with their light manufacturing, assembling, packaging, and promotional product services at Enrichment in Daytona Beach. **EI** also manufactures their own line of products which are available for sale (crab traps, safety glasses and goggles, ear plugs, office wall clocks, dust mops and jumper cables) **During FY 2014-15, EI provided employment opportunities for 197 clients and had sales of \$331,070 from products and manufacturing support.**



Another component of **EI** is **Service Contracts**, which provides janitorial and lawn care services for public and private entities. The goal is to provide quality services while providing employment opportunities for individuals with disabling conditions. The service contracts maintain a 75% or better ratio of work being completed by individuals with a disabling condition at all sites. **This component of Enrichment has 122 employees with disabling conditions who work at their Service Contract Sites, making up 82% of the workforce. During FY 2014-15, there were 16 contract sites in 5 counties totaling \$2.8 million in revenues.**

15

Residential Services

16

WARM (Women Assisting Recovering Mothers) at Vince Carter Sanctuary is a long term residential treatment facility for 80 women exhibiting symptoms of drug and alcohol dependence, with 32 slots designated for those women who are pregnant, post partum, and parenting young children. The women live on campus in a therapeutic and supportive environment. Those with children are able to have their children (under the age of 6) in residence with them. Children age 6 and over are able to visit overnight on weekends.

WARM is a diverse, multi-cultural program providing a broad range of therapeutic, wrap around interventions, based upon the client needs identified during the admission assessment. Strategies include: Moral Reconciliation Therapy, Motivational Interviewing Therapy, Cognitive Behavioral Therapy, Seeking-Safety Curriculum guided therapies, Stages of Change Model, Strengthening Families – Non-Violent Parent Education and Living in Balance Curriculum.



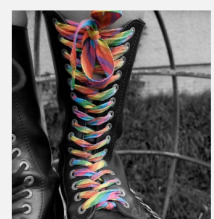
During FY 2014-15, WARM at Vince Carter Sanctuary served 193 women and 89 children. A total of 16 drug free babies were born to mothers living at Vince Carter Sanctuary during the year.

Treatment = Results: *We are proud to be able to report that over 185 babies have been born drug-free through the services at WARM.*

The **Putnam Adult Residential Treatment (ART) Program** is a short-term intensive program for adult males and is designed to provide clients with the tools necessary to begin and maintain their recovery. The program philosophy is to create an atmosphere of safety and care, and to promote the stability of daily living in recovery through therapeutic interaction. Co-occurring capable, the program offers as needed psychiatric evaluation and the management of psychotropic medications. **During FY 2014-15, the Putnam residential program served 89 clients.**

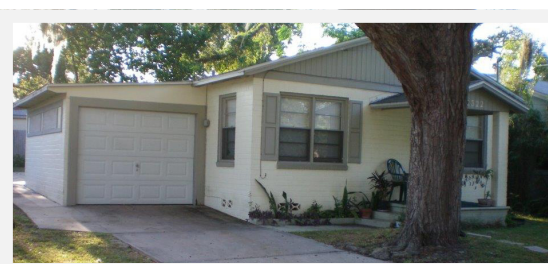
DeLand Men's Residential Treatment Program (DMRT) is a 54-bed men's substance abuse treatment program accepting both voluntary and involuntary clients experiencing a wide variety of substance abuse/dependence issues. Besides the primary focus on substance abuse disorders, the program is designed to effectively manage co-occurring mental health issues. DMRT provides a structured atmosphere, promoting self-awareness through individual, group, community-based therapy and psychiatric intervention. **Since its SMA opening in May 2015, DMRT served 63 clients.**

BEACH House is a shelter that provides short-term respite for youth ages 10 to 17. These youth are truant, ungovernable or runaway/homeless. Referrals come from our **CINS/FINS Service Manager**, CINS/FINS (Children In Need of Services/Families In Need of Services) court, Safe Place sites, law enforcement, school personnel and parents. We provide youth in our care with shelter, meals, individual and group counseling, educational groups, and family therapy. Our goal is family reunification and assisting the family in building communication skills and relationships. Program staff also promote awareness activities related to youth at risk in our community. **During FY 2014-15 BEACH House programs served 552 youth and their families.**



The **Residential Adolescent Program (RAP)** is a 24-bed facility serving substance dependent youth ages 13-17, utilizing individual, group, and family interventions. The average length of stay is 4-6 months. The proven principles of AA/NA are the foundation for the clinical program. Dialectical Behavioral Therapy is an important ingredient in treatment along with positive peer culture, reality therapy, outdoor therapeutic model, experiential learning theory, and behavior modification systems. Education services are provided by Volusia County Schools. The program is co-occurring capable, staffed by licensed and certified therapists, nurses, and youth specialists. **During FY 2014-15, the RAP program served 87 youth and their families.**

SMA's **Supportive Housing Program** provides a safe, sober, and supportive living environment for persons who are homeless. It specifically targets the chronically addicted, often dually-diagnosed who are residing in unsuitable environments or treatment programs. Permanent housing sites are currently in use for homeless persons with disabilities in six locations throughout Volusia County. Because SMA's Recovery Homes operate at capacity most of the time, a referral network has been developed with other supportive housing options in the community in an effort to address the housing needs of clients leaving SMA's residential programs. **Currently SMA houses 24 residents, including 7 children.**



17

Crisis Services

18

SMA's Crisis Services provide 24-hour emergency screening and admission to mental health crisis stabilization, drug abuse detoxification and/or referral to other services. Our crisis services are located at Pinegrove in Daytona Beach, the central point for screening, referral and placement of involuntary clients under the Baker Act and Marchman Act. Baker Act court is now held weekly on the Pinegrove Campus and a court liaison provides assistance to families filing Marchman Act petitions for involuntary assessment or treatment. **In FY 2014-15, SMA Crisis Services provided 5,997 screenings at Pinegrove.**

The Volusia County Crisis Stabilization Unit (CSU) and Detoxification (Detox) Services are licensed for 30 beds and 19 beds respectively. Our average length of stay in these units is 3.5 days for CSU and 3.3 days for Detox. Individuals receive medication appropriate to their presenting problems, individual and group counseling, and discharge planning toward the next appropriate level of care. Individuals can be safely medically detoxified from alcohol, opiates, prescription medications, and other physically addicting drugs. Registered nurses and behavioral health techs are on duty 24/7 as is a Psychiatrist and/or Advanced Registered Nurse Practitioner to direct treatment. **During FY 2014-15, the SMA Detox Unit treated 1,697 individuals and 3,274 individuals were treated in SMA's CSU.**



The **Volusia Rape Crisis Center** specializes in advocacy, crisis intervention and trauma counseling and therapy for adolescents and adults who have experienced sexual assault as a primary or secondary victim. Advocates provide crisis intervention services, assist victims in understanding their rights and options and offer support throughout the medical and criminal justice process to ensure the victim's recovery. Advocates/specialists are able to be reached 24/7, by calling the 24 hour Rape Crisis Hotline (800-503-7621). The Volusia Rape Crisis Center is recognized as the primary rape crisis center for Volusia County.

The **Crisis Triage and Treatment Unit (CTTU)** is a crisis assessment and referral service for Flagler County residents experiencing a behavioral health crisis and is located in the Brown and Brown Outpatient building at the Vince Carter Sanctuary. This program is funded through a grant awarded to Flagler County and is limited to individuals escorted to the program by law enforcement between the hours of noon and midnight daily. Law enforcement is able to transport these individuals to SMA to assess and determine the appropriate clinical disposition. When required and appropriate, SMA then transports to a receiving facility in Volusia County. **During FY 2014-15, the CTTU program served 437 individuals.**

The Putnam Detoxification Unit is a licensed 8-bed facility, serving the needs of Putnam and St. Johns counties. Individuals receive medications appropriate for their presenting problems, group and individual counseling and discharge planning. Alcohol and prescription drug abuse accounts for the majority of all admissions. The unit is staffed 24/7 with nursing care (Registered, and Licensed Practical Nurses), and is supervised by a Director of Nursing who is a licensed ARNP. **During FY 2014-15, the Putnam Detox Unit served 332 clients.**

Justice Services



Reality House is a 173-bed, adult male residential program, contracted through the Florida Department of Corrections in FY 2014-15. This facility provides a 9 to 12 month residential substance abuse treatment program and a Work Release Program. It is the only therapeutic community of its kind in Florida offered to inmates outside the walls of a prison. Milieu therapy and social learning theory provide the foundation for the recovery and reentry process. Services include culinary arts program, individual and group counseling, family education, recreation, spiritual services, self help groups, anger management, communication skills, daily living skills, domestic violence groups, family dynamics group, drug screening, gradual reintegration back into the community, gainful employment, accumulation of savings from paid employment, and outside referrals as needed. **During FY 2014-15, a total of 397 clients were served at Reality House 1 and 2.**

SMA Work Release is a newly private contracted Florida Department of Corrections 84-bed work release facility. The program allows selected inmates to work at paid employment in the community during the last months of their confinement. Inmates must return back to the facility at the end of each workday. Work Release provides: Gradual reintegration back into the community, Gainful employment, Accumulation of savings from paid employment, Preservation of family and community ties, Culinary Courses, Participation in self-help programs, Fifty beds are available for outpatient substance counseling. **Since its inception this year, 93 individuals have received services from SMA Work Release.**

19



Brian Conrad, Chefs Kirk Kief, Steven Galassi, and James Fryman,
John Kent, and Andrew Williams

The SMA Foodservice is responsible for preparing and delivering breakfast, lunch, and dinner to 10 separate facilities, which accounts for over 1400 meals per day. The meals are prepared out of Reality House, where the SMA Food Service staff members are responsible for the clients at Reality House working back in the kitchen. In addition, the clients at Reality House and SMA Work Release are also offered an educational opportunity through the Culinary Arts Program. This affords them instruction in Nutrition, Restaurant Management, Food Production, Dining Room Apprentice, and the Food Safety Manager certification which is all accredited through the University of Florida. Some clients, if qualified, can gain certification through the American Culinary Federation by earning the Certified Culinarian, or the Certified Pastry Culinarian distinction. **To date, we have certified 19 clients through this opportunity.**

"I have an update for you. I've been promoted to Sous chef. Got a substantial raise plus 10% ownership. We are going to open another restaurant soon which will put me as executive chef in one of them. They are very happy with me and want to keep me for the long term."

A recent graduate of the Culinary Art Program.

The Adult Justice ReEntry Program located at Columbia Correctional Institution in Lake City, Florida, provides multiple services for the Department of Corrections and the inmates assigned to them. First is the ReEntry Transitional Program itself, which is the only program to serve high risk, close custody inmates in the state regardless of crime committed, using a "modified therapeutic community" approach. The ReEntry Transitional Program provided life skills, job readiness, and socialization skills training to 383 client-inmates during FY 2014-15. There is also TIER 1 Substance Abuse Prevention classes, serving 115 general population inmates, and "Thinking For Change" (T4C) classes to 47 general population inmates during FY 2014-15, in addition to Anger Management classes (20) and "Parenting From Inside" classes to an additional 13 general population inmates, for. **During the FY 2014-15, a total of 578 inmates were served in all programs offered by SMA at CCI.**



20

Community Outreach & Education

Our **Family Education Program (FEP)**, utilizing the evidence based Family Unit Matrix model, provides 12 educational sessions for family members. The family education program describes how addiction impacts the entire family and offers assistance. The goal is to provide information and guidance to families struggling to cope with the family impact of addictive disease. **During FY 2014-15, FEP provided training to 204 individuals.**



SMA is one of the community partners that make **Crisis Intervention Training (CIT)** possible, along with NAMI of Volusia/Flagler County and the Volusia and Flagler County Sheriffs' Departments. The CIT program is a community effort designed to improve the skills of law enforcement to mental health emergencies with goals of assuring safety, understanding, and service to the mentally ill and their families. **To date this program has trained more than 1,015 first responders in Volusia and Flagler Counties including 92 officers in FY 2014-15.**

"Most useful training I have received in my 10 years of experience in law enforcement/emergency services."

Mental Health First Aid is an 8-hour training certification course which teaches participants a five-step action plan to assess a situation, select and implement interventions and secure appropriate care for the individual. It introduces participants to risk factors and warning signs of mental health problems, builds understanding of their impact and overviews common treatments. **This program has trained more than 740 community members since its May 25, 2011 inaugural class, including 292 in FY 2014-15.**



"It's been a while that a training has been helpful and directly relevant."

SMA's **Speakers Bureau** offers presentations in the community on topics ranging from SMA services as a whole, specific programming, and/or behavioral health issues. Speakers are free and available for local special events and radio appearances upon request.

21

Celebrating Staff

22

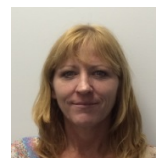
SMA supports and encourages staff growth through programs like tuition reimbursement for staff wishing to further their education within the field of behavioral health and/or associated administrative degrees and longevity awards highlighting years of service. **During FY 2014-15, SMA paid out \$12,000 in tuition reimbursement.**

SMA is proud to recognize the following staff for obtaining their degrees:

- Julia Crumbley, MA in Criminal Psychology
- Deborah Hoffman, MA in Forensic Psychology
- Amanda Perez, MS in Mental Health Counseling
- Kathy Schulman, BS in Criminal Justice



Julia



Deborah



Amanda



Kathy

The following are also acknowledged for obtaining their Certificate/Licensure:

- Bill Blower, LCSW
- Jacob Bryant, LCSW
- Evelyn Carpenter, CAC
- Kathy Deissler-Gage, CAP
- Devry McGill, CAP
- Roger Pawlak, LMHC
- Kathy Smotherman, LCSW
- Joslyn Watson, LMHC



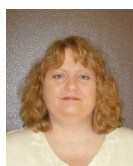
Bill



Jacob



Evelyn



Kathy



Devry



Roger



Kathy



Joslyn

SMA is very fortunate to have staff with longevity with the agency. During the fiscal year, there were numerous years of services awards, including 32 employees celebrating 5 years, 10 celebrating 10 years, 16 celebrating 15 years, 6 celebrating 20 years, 2 celebrating 25 years, and 1 celebrating 30 years. Our 30 year employee was Tom Czopek, Project Manager Vocational Services with the Enrichment Program.

Congratulations to each and every one of these staff - We appreciate your dedication to SMA and to furthering your education.

SMA Employees have received special recognition throughout the year by other agencies, so we acknowledge the following staff for being a part of a stand out team:



Joe Dzienis, Cy Perry, Mark Pitts, Bettejane McClay, Cindee Smith, William Segrest, Lonnie Jackson, Joan Grayson, David Carter and John Strickland

SMA's Re-Entry Program at Columbia Correctional Institution Recognized by Florida TaxWatch

Florida Tax Watch selected the SMA ReEntry Program to be a recipient of a 2015 Prudential-Davis Productivity Award to acknowledge the savings to taxpayers by the significant reduction in recidivism & the associated cost to society of crimes committed by ex-offenders who reoffend.

Lamar "Sonny" Donaldson, Director SMA CTTU was named Volusia/Flagler Social Worker of the year. This award was presented at Volusia/Flagler Unit of NASW-FL's Annual Social Work Month Awards Banquet by Matt Gilmour, President Volusia/Flagler NASW Chapter.



Ivan Cosimi, Sonny Donaldson, and Matt Gilmour

RESPECT's Southeast Florida awarded Certificates of Appreciation for going above-and-beyond the call of their maintenance and janitorial duties for interstate travelers to SMA Behavioral Healthcare employees **Gloria Mathis, Joe Miller, Judy Miller and Donovan Davidson** at the I-95 Palm Bay Rest Area. Also celebrated were **Tara Garrett and David Baker** at the I-95 Mims Rest Area and **David Anderson** at the I-95 Weigh-In-Motion facility in Flagler County.

SMA is proud to be a part of community events and activities supporting great causes and we are proud of the SMA employees who volunteer and support these events as well.

Breast Cancer Awareness Walks—IDignity DeLand & Volusia—Mutt Strutt benefitting the Halifax Humane Society—National Night Out Events
Recovery Month—Walk for Dignity for Mental Illness Awareness Week—Mental Health Month
United Way Events: Positive Picketing, Publix Thank You Events, Power of the Purse, Speaking Engagements

23

Celebrating Volunteers

24



SMA provides opportunities to volunteer, intern, or volunteer in groups in almost all of our programs. We have 38 registered volunteers, 83 interns, a large number of anonymous individuals from the recovery community, and 7 groups who donate their time, talent and treasure to enhance SMA programming and support client services every year. **During FY 2014-15, volunteers donated over 18,750 hours, which translates to \$432,765 of in-kind match.**

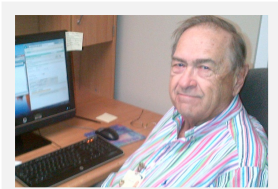
The **12-Step Community** is extremely active in SMA's programs. There are multiple AA and NA groups, as well as an Al-Anon group, facilitated weekly by volunteers from the community and provided at SMA sites.

In addition, SMA has a volunteer **Board of Directors** made up of 20 professionals from our community. Board members attend monthly Board meetings, serve on committees, participate in advocacy activities and work with the SMA Foundation on fundraising efforts. They put in numerous hours toward the governance of SMA, hours that are not included in the volunteer hours previously indicated.

There are also additional groups such as the **FACT Advisory Committee, WARM/Vince Carter Sanctuary Community Support Council, Adolescent Advisory Committee, and Enrichment Industries Community Support Council**, where community members participate to provide valuable feedback on SMA services.

In April 2015, volunteers were celebrated and recognized for their contributions to SMA at their **Annual Volunteer Appreciation Night** event at the Peninsula Club. Over 50 volunteers and staff attended and shared stories of their volunteer work and what it means to them. The event was catered by the WARM chef and clients.

For FY 2014-15, SMA honored **Ed Marusa** as the Volunteer of the Year for his tireless work for the Administrative Departments. With many years of superb, consistent and sustained support of SMA's mission, Ed was also SMA's nominee for the Volusia - Flagler United Way's Volunteer of the Year.



SMA would like to thank its community partners and funders for their part in SMA's success in FY 2014-2015*



* SMA partners with numerous agencies and organizations, all of which may not be included

25

STEWART-MARCHMAN-ACT Foundation

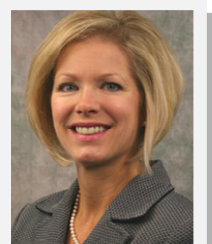


26

The Stewart-Marchman-Act Foundation focuses on building the resources to complement the programs of Stewart-Marchman-Act Behavioral Healthcare, providing advocacy, community education, and funds to conduct research. This past year, the Foundation has been busy with various fundraising efforts and events to increase community awareness and reduce the stigma of addiction and mental illness.

Achievements over the past year include:

The hiring of our new **Executive Director, Carolyn Sentelik**. Carolyn comes to us from the Florida Hospital system in the Tampa Bay Region. With more than twenty-four years in the healthcare arena, Carolyn brings a wealth of experience in raising philanthropic support for the nonprofit sector.



Carolyn Sentelik



Who is Jay? During Mental Health Month in May, the Foundation kicked off the Who is Jay? campaign. Our community was inundated with Who is Jay? t-shirts, bumper stickers, buttons, television commercials and billboards all with the intent of driving traffic to the website www.whoisjay.org. The Who is Jay? website provides an abundance of resources for anyone interested in or affected by mental illness. The intent of the Who is Jay? site is to fight the stigma of mental illness, provide support, educate the public and advocate for care. To date, the site has had more than 6,500 hits and is credited with helping numerous individuals affected by mental illness.

In July 2015, the Foundation held its **17th Annual Dinner Celebration and Auction** honoring Judge Joseph G. Will at the Daytona 500 Club. With more than 275 people in attendance, the event saw record-setting net proceeds with more than \$127,000 raised to support the **Huger Adolescent Campus at Tiger Bay**. The highlight of the evening was a check presentation from Sheriff Ben Johnson of the Volusia County Sheriff's Office of \$50,000 in forfeiture funds.

With the support of our friends at the Daytona Blues Festival, we were able to provide \$15,000 to purchase new furniture for **WARM (Women Assisting Recovering Mothers)** at the Vince Carter Sanctuary. Thanks to the donation of an anonymous donor, the Foundation provided \$18,000 to construct a Padded Seclusion Room for the **W. Chester "Chet" Bell Crisis Center at Pinegrove**. This room has greatly reduced the use of physical and mechanical restraints on clients in crisis.

The **Residential Adolescent Program (RAP)** building was in need of a professional paint job, with specialty products to withstand the wear and tear of teenagers, so the Foundation provided \$40,000 to help cover the costs associated with this special project. Additionally, the Foundation provided \$51,000 for much-needed renovations to the **Putnam Outpatient, Detox & Residential Unit**.



Ivan Cosimi, Connie Ritchey, Sheriff Johnson, Jon Greaves, Carolyn Sentelik, and Andrew Gurtis

A Message from the SMA Foundation Board

2015–2016 SMA Foundation Board



Jon Greaves,
SMAF Board Chair
2013-2015

It's a new day at the SMA Foundation! Our activity in support of SMA Behavioral Health Care's programs has been one of the most rewarding experiences of my life. In May, we began an ambitious campaign to raise \$500,000 for a complete renovation of the James Huger campus for treatment of adolescents at Tiger Bay. This will make a dramatic difference in the lives of our troubled youth. In this coming year, we will be introducing an event new to the community called Men Who Cook where area male celebrities show off their culinary skills. This will be fun for those who attend and participate. Yes, it's a new day at the SMA Foundation! ~ Jon Greaves

Chairman:
Melisa Murphy
Vice-Chairman:
Jimmy Foster
Secretary:
Andrew Gurtis
Treasurer:
Sherry Keyes
Immediate Past Chair:
Jon Greaves

Members:
Debra Berner
Lonnie Brown
Pam Carbiener, MD
Alan Florez
Maureen France
Julie Giese
Frank Heckman
Peter Heebner
Larry Kelly
Carl Lentz, IV
David Perryman
David Remy
Jill Simpkins
Howard Stange
Bob Wheeler
Ryan Will

Founder and Director Emeritus: James H. Foster

27



"exceptional and comprehensive behavioral healthcare"



Stewart-Marchman-Act Behavioral Healthcare is an equal opportunity and drug-free workplace and prohibits discrimination in all programming and activities on the basis of race, color, sex, age, religion, national origin, marital status, disability, veteran's status, or other legally protected status.

If you are a person with a disability who needs any accommodation, you should contact the office of our ADA Coordinator who is physically located at 1220 Willis Avenue, Daytona Beach, FL - 32114.

You can also call, fax or e-mail your needs via Phone: (386) 236-3112, Fax: (386) 236-1819 or e-mail: ADCoordinator@SMAbehavioral.org.

SMA is CARF accredited and SMA programs are sponsored by SMA and the State of Florida Department of Children and Families.

Access Center 24/7
1-800-539-4228

Check out our website
www.SMAbehavioral.org



Like us on Facebook
<https://www.facebook.com/SMABehavioralHealthServices>

Follow us on Twitter
<https://twitter.com/SMAbehavioral>

